

# Making your own CSS Framework

The why and the how, of splitting your CSS into a reusable, and consistent framework.

# Sections

The Why

The How

The Code

Go Grab the code now

[z.umn.edu/cehdcss](https://z.umn.edu/cehdcss)

# Why Make One?

Uniqueness... that's manageable

# Why we did it: Under Pressure

- In one of the largest colleges at the U of M
- Managing around 200 web sites
- Size of web team going from 5, down to 2
  - Uncertain of future capacity
- The political problem:
  - How do you let every department feel individual, but stay cost effective

# It's easier for..

- Designers
- Coders
- Quick deployment
- Future upgradability
- Accessibility
- Your users
- Managing far more sites

# What were our priorities?

- Flexible
  - Individuality: Different colors, images, and a different feel
- Consistently Accessible
  - Use H tags correctly, and consistently
  - Jump to content and nav is consistent
- Interchangeable
  - Can pull one piece out of a site, and drop it into another... easily

# Weighing our needs

- Where is the balance between flexibility, and time constraint?
- Is there anything you are sure will be on every page?
- What do you suspect will be on every page?



# What's the same on every page?

- Logos
- Banners
- Page width
- Search
- Footer
- Nav (kind of)
- content

# Getting Started

(How do you actually make one?)







Search



Search



# Department of Obfuscation Studies



Search



# Department of Obfuscation Studies

Lorem  
Ipsum  
Dolar  
Sit  
Amet  
Donec  
Nulla





# Department of Obfuscation Studies

Lorem  
 Ipsum  
 Dolar  
 Sit  
 Amet  
 Donec  
 Nulla

## Welcome to Our Department

Lorem ipsum dolor sit amet, consectetur adipiscing elit. Nulla dapibus mi id lacus elementum sagittis. Aliquam in tortor vel lectus cursus tristique. Integer vulputate eleifend lacinia. Morbi at ante sem, ut gravida orci. Maecenas molestie, nisl eu mattis mattis, dolor libero porttitor erat, vel consequat nunc odio id mauris. Suspendisse pellentesque vulputate justo eget mollis. Mauris a facilisis neque. Proin suscipit lorem non felis viverra sollicitudin sit amet nec arcu. Sed euismod dolor nunc, ut feugiat dolor.

Lorem ipsum dolor sit amet, consectetur adipiscing elit. Nulla dapibus mi id lacus elementum sagittis. Aliquam in tortor vel lectus cursus tristique. Integer vulputate eleifend lacinia. Morbi at ante sem, ut gravida orci. Maecenas molestie, nisl eu mattis mattis, dolor libero porttitor erat, vel consequat nunc odio id mauris. Suspendisse pellentesque vulputate justo eget mollis. Mauris a facilisis neque. Proin suscipit lorem non felis viverra sollicitudin sit amet nec arcu. Sed euismod dolor nunc, ut feugiat dolor.

Lorem ipsum dolor sit amet, consectetur adipiscing elit. Nulla dapibus mi id lacus elementum sagittis. Aliquam in tortor vel lectus cursus tristique. Integer vulputate eleifend lacinia. Morbi at ante sem, ut gravida orci. Maecenas molestie, nisl eu mattis mattis, dolor libero porttitor erat, vel consequat nunc odio id mauris. Suspendisse pellentesque vulputate justo eget mollis. Mauris a facilisis neque. Proin suscipit lorem non felis viverra sollicitudin sit





# School of Social Work

*Leadership for a just and caring society*



CEHD | College of Education + Human Development

[Home](#)

[Prospective Students](#)

[Current Students](#)

[Programs & Degrees](#)

[People](#)

[Continuing Education](#)

[Alumni and Friends](#)

[Research and Outreach](#)

[About SSW](#)

[Giving](#)

School of Social Work  
University of Minnesota  
105 Peters Hall  
1404 Gortner Avenue  
Saint Paul, MN 55108  
612-625-1220  
[Contact Us](#)

## Welcome to the School of Social Work!

### Leadership for a Just and Caring Society

At the School of Social Work, we practice what we teach: leadership, scholarship, social justice, and community engagement.

Since our founding in 1917, we have graduated more than 4,500 professional social workers, youth workers, scholars, advocates and policy makers who serve our state, country and beyond. Our Ph.D. and M.S.W. programs directly support and promote the knowledge, skills, and values of the social work profession. Our undergraduate programs—youth studies, family violence prevention, and social justice—support and promote ways of valuing, living, and working in the world that further social change and the common good.

### Research Distinguishes Our Programs

The School of Social Work is an integral part of a world-class research university. Our graduate programs are unique in Minnesota, preparing a diverse student body to be research-savvy professionals and scholars, and providing research and engagement with a local-to-global impact. Our undergraduate programs are interdisciplinary; emphasize community engagement and putting theory into practice, and build on the strengths of our faculty members and their research.

## Upcoming Events

- |                |           |   |
|----------------|-----------|---|
| April 6, 2011  | Wednesday | M.S.W. Field Fair   |
| April 7, 2011  | Thursday  | Pizza with Jim  |
| April 9, 2011  | Saturday  | Direct Practice Career Brunch   |
| April 9, 2011  | Saturday  | Pizza with Jim  |
| April 15, 2011 | Friday    | Free Workshop: Community Based Participatory Research and Social Work |
- [More Events...](#)

## SSW Profiles

Dylan Hackbarth,  
Youth Studies Major



# Department of FAMILY SOCIAL SCIENCE

CEHD | College of Education + Human Development

[UNDERGRADUATE  
STUDENTS](#)

[GRADUATE STUDENTS](#)

**[FACULTY & STAFF](#)**

[Expertise Database](#)

[ALUMNI & FRIENDS](#)

[DEPARTMENT](#)

[RESEARCH & DISCOVERY](#)

[PROJECTS & CENTERS](#)

[OUTREACH & EXTENSION](#)

[COURSES](#)

[NEWS & CALENDAR](#)

[GIVING](#)

  
[go](#)

## Faculty & Staff

The department's distinguished faculty; known for excellence in teaching, theory development, research, outreach, and engagement, are committed to the application of research and theory for the benefit of the everyday lives of families.

Our lively, result-focused atmosphere is a place where true collaboration and learning are the keys to our success. Our staff provides professional and personalized support for faculty, students, alumni, and the college. The staff is encouraged to participate in career growth and professional development and is committed to providing excellent service.

## Faculty

Sara Axtell

Jean Bauer

Wayne Caron (deceased)

Shonda Craft

Sharon Danes

William Doherty

Jodi Dworkin

Abigail Gewirtz

William Goodman

Steven Harris

Jan McCulloch

Cynthia Meyer

Patricia Olson

Kathryn Rettig

Paul Rosenblatt

Martha Rueter

Catherine Solheim

Marlene Stum

Liz Wieling

Blong Xiong

Virginia Zuiker

## Non-resident Teaching Faculty

Michelle Craveiro

John Jankord

Mary Jo Katras

Sara Lassig

Beth Magistad

Tai Justin Mendenhall

Brier Miller Minor

Kristine Piescher

Lynn Von Korff

Sara Wright





- About the Institute +
- Child Psychology Graduate Program +
- Child Psychology Undergraduate Program +
- Early Childhood Education Programs +
- Minors & Certificates
- People +
- Research & Outreach +
- Shirley G. Moore Lab School
- News & Events +
- Giving

## Welcome!

**The Institute of Child Development-Department of Child Psychology (CPsy)** at the University of Minnesota has long been a premier center of scholarship, teaching, and outreach devoted to the understanding and fostering of child development. Coursework and research activities focus primarily on the central cognitive, social, emotional, and psychological processes that underlie the development of infants, children, and youth.

Founded in 1925, the Institute is one of the oldest departments studying children's development in the United States. From its inception, a key tenet of our department has been to "give away" child psychology. This philosophy has created an environment rich with collaborations, new ideas, and exciting interdisciplinary work. See more about our [history](#), our [undergraduate](#) and [graduate](#) programs, the [Shirley G. Moore Lab School](#), and the various collaborative [centers](#) and [programs](#) we are involved in!

## Upcoming events:

### April 7: [ICD Bag Lunch Colloquium](#)

"Children Pitching In and Catching On" Barbara Rogoff, UC-Santa Cruz

[Submit a calendar item!](#) See the [full calendar](#).

## ICD News:

### [Masten interviewed on talking to kids about Japan disaster](#)

March 17, 2011

Ann Masten, professor in the Institute of Child Development, comments extensively in a *Minneapolis Star Tribune* parenting blog article on talking with children about the disaster in Japan. Masten, who studies resiliency in children following disasters and other adverse circumstances, provides useful information for parents in relation to helping children understand any disaster. Read the article [here](#).

### [Research using X-Box Kinect to diagnose mental disorders in children](#)

March 15, 2011

A collaborative research project involving Canan Karatekin, associate professor at the Institute of Child Development, and faculty from the Medical School and the College of Science and Engineering is making news for its groundbreaking use of the X-Box Kinect





## Research & Outreach

### Research Highlights

### Centers & Labs

### Outreach & Engagement

Teacher Education Redesign  
Initiative

### International Activities

### Educator Development and Research Center

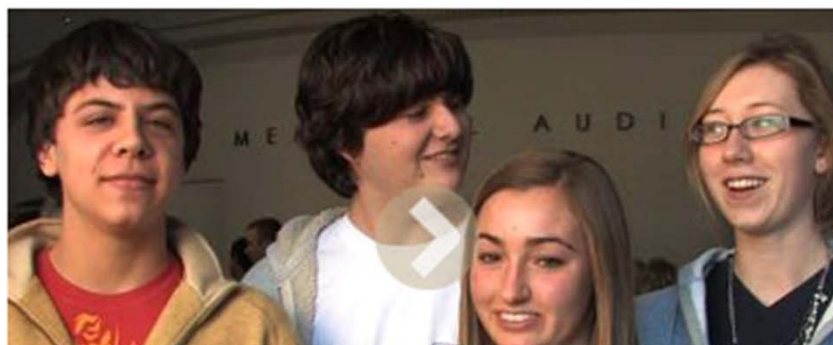
### Professional Development

## CEHD | College of Education + Human Development

### OUTREACH AND ENGAGEMENT

CEHD works in "partnership with public and private sectors to enrich scholarship, research, and creative activity; enhance curriculum, teaching and learning; and prepare educated, engaged citizens" ([Office for Public Engagement](#)). We accomplish this work through engaging in research, teaching, and service for the community, in the community, and with the community.

### College in the Schools Program Presents the First Annual Golden Femur Awards



### Contact

#### CEHD Office of Engagement & Faculty Development

Heldi Barajas  
Associate Dean  
hbarajas@umn.edu  
612-625-4823

### University Links

Office for Public  
Engagement

Urban Research and  
Outreach/Engagement  
Center (UROC)

The Alliance: A University

DEPARTMENT OF  
Curriculum & Instruction

CEHD | College of Education + Human Development

## WHAT'S INSIDE

## CURRENT STUDENTS

## FUTURE STUDENTS

COOPERATING  
TEACHERS

## PROGRAMS AND DEGREES

## PEOPLE

## RESEARCH AND OUTREACH

## ABOUT C&amp;I

Curriculum and  
Instruction125 Peik Hall  
159 Pillsbury Drive SE  
Minneapolis, MN 55455

CInfo@umn.edu

Voice: 612-625-4006  
Fax: 612-624-8277

## Our Programs



## People

[administrative staff](#), [faculty and instructional staff](#), and [affiliate graduate faculty](#)

## Administrative staff

## Professional administrators

[Katherine Byrn](#)Coordinator clinical experiences, elementary  
licensure program[Amy Jo Lundell](#)Coordinator secondary education field  
experiences

## Technology support

[Matti Koivula](#)

IT (Instructional Technology) Fellow

[Daniel Ferrara](#)

Technical coordinator

## Website and news

## Support staff

[Jessie Eastman](#)Executive operations/student services  
specialist  
Graduate studies assistant[Vicki Griffin](#)

Executive office and administrative specialist

[Kathryn Louis](#)

Assistant to the Chair

[Caitlin Tupa](#)Principal office and administrative specialist  
faculty support[Roxanne Weymouth](#)Executive office and administrative specialist  
department chair support

# Writing the Code

(Start with the Core of your sites)

# Building in the frame

- Building those main boxes you use all the time
  - University Header (never changes)
  - Department Header
  - Navigation
  - Content Area
  - Footer





# 1<sup>st</sup> Step

-CSS Reset-

```
h1, p, div, ul, li {  
    margin: 0; padding: 0; border: 0;  
}
```

<http://meyerweb.com/eric/tools/css/reset/>

# The Container

```
div#container {  
    width: 960px;  
    margin: 0 auto;  
    text-align: left;  
}
```



# Department Header

```
header {  
  width: 960px;  
}
```



# U of M Header

```
div#UMNheader {  
  width: 960px;  
}
```



# Navigation and Content

```
nav {  
    width: 210px;  
    float: left;  
}
```

```
div#content {  
    width: 750px;  
    float: left;  
}
```





# Footer

```
footer {  
  width: 960px;  
}
```



# Building the flexible parts

- Columns

- `div.half {  
    width: 360px;  
    float: left;  
}`
- `div.third {  
    width: 240px;  
    float: left;  
}`

- Content Styling

- `div#content p {  
    margin:10px 25px;  
    padding:0;  
}`
- `div#content ul {  
    margin:10px 25px  
    10px 25px;  
    padding:0;  
    list-style-type:disc;  
}`

## RESEARCH AND OUTREACH

Research and outreach are natural partners to teaching and are vital to the mission of the college and the University.

### International Activities

CEHD faculty and staff work with international partners on all continents to further [international research and outreach](#).

## RESEARCH

The college houses a new center focusing on [STEM education](#) (science, technology, engineering, and mathematics), is currently embarking on a [significant re-envisioning of teacher education](#) (TERI), and is taking part in a University-wide effort that will implement a USAID grant of up to \$185 million with the [goal to help developing countries respond to animal diseases that pose a threat to human health](#).

[More research highlights »](#)

### Centers and Labs

The college houses more than 20 college-wide and nationally designated [research centers and labs](#). The centers and labs integrate the college's teaching, research, and outreach missions as well as provide a programmatic and financial framework for graduate student research.

## OUTREACH AND ENGAGEMENT

[Outreach and engagement](#) are important partners for teaching and research. When faculty, staff, and students are involved in the community around them, they can spread the knowledge they've gained in classrooms and labs to make the community a better place.

### Educator Development and Research Center (EDRC)

The [Educator Development and Research Center](#) promotes a culture of professional learning and engagement concerning issues central to P-12 professionals.

### Professional Development

Explore [professional development opportunities](#) available through the college.

# Margins



# The base of your framework:

- CSS Reset
- Structural elements (the box model)
  - To future proof, make them match HTML5
- Major accessibility pieces
- Text styles
- Image Styles
- Columns for layout (furthering the box model)
- A basic print style sheet

# The style and the look

- Colors
- Header images
- Background images
- Stylization of the nav
- Images





## G5 Firefly - 2010-04-02

CEHD | College of Education + Human Development

### Modify These Templates!

Congratulations on your recent implementation of the Firefly template. Created on April 2nd, 2010, Firefly is lightweight and easy to implement. The Firefly template merges core.css and the design.css together into one easy to update style sheet. If you so chose, Firefly also accepts core components such as jQuery, AJAX, clam shell menus and even accordion menus. Read on for implementation tips.

### Rename Files

Open up the attributes folder, anything named Firefly in the sub folders can be replace with the name or acronym of your site. CSS/Firefly.css for example.

### U of M Header

**/attributes/includes/UofM-header.html**

Firefly has the new U of M Header modified by CEHD to work in IE 6 & 7, Safari and Firefox. Check the search box to make sure you are pointing to the collection you want. By default it is set to the college search results page, the Google search can be redirected to take advantage of the tabbed search results. (Directions coming, Web Team can help for now)

### Unit Header

**/attributes/includes/Firefly-header.html**

Set the link and title tag to reflect your site.

Super easy to spot: `<a href="/" title="RESET THIS LINK AND TITLE TAG"></a>`

The picture is pulled in through CSS. Open Firefly.css and search for "Department Header Stuff" that will bring you to the section where the header image is called and the areas for the link areas floating over the image are defined. Note the orange bar under the header is also in this section as a border-bottom style.

### Left Navigation

[Home / Setup](#)[Layouts](#)[Whole](#)[Halves](#)[Thirds](#)[Third + Two Thirds](#)[Two Thirds + Third](#)[Whole + Thirds +  
Whole](#)[Add Features](#)[Clam Shell Menu](#)[Google Search](#)





# School of Social Work

*Leadership for a just and caring society*



CEHD | College of Education + Human Development

[Home](#)

[Prospective Students](#)

[Current Students](#)

[Programs & Degrees](#)

[People](#)

[Continuing Education](#)

[Alumni and Friends](#)

[Research and Outreach](#)

[About SSW](#)

[Giving](#)

School of Social Work  
University of Minnesota  
105 Peters Hall  
1404 Gortner Avenue  
Saint Paul, MN 55108  
612-625-1220  
Contact Us

## Welcome to the School of Social Work!

### Leadership for a Just and Caring Society

At the School of Social Work, we practice what we teach: leadership, scholarship, social justice, and community engagement.

Since our founding in 1917, we have graduated more than 4,500 professional social workers, youth workers, scholars, advocates and policy makers who serve our state, country and beyond. Our Ph.D. and M.S.W. programs directly support and promote the knowledge, skills, and values of the social work profession. Our undergraduate programs—youth studies, family violence prevention, and social justice—support and promote ways of valuing, living, and working in the world that further social change and the common good.

### Research Distinguishes Our Programs

The School of Social Work is an integral part of a world-class research university. Our graduate programs are unique in Minnesota, preparing a diverse student body to be research-savvy professionals and scholars, and providing research and engagement with a local-to-global impact. Our undergraduate programs are interdisciplinary; emphasize community engagement and putting theory into practice, and build on the strengths of our faculty members and their research.

## Upcoming Events

- April 6, 2011 Wednesday  
M.S.W. Field Fair
- April 7, 2011 Thursday  
Pizza with Jim
- April 9, 2011 Saturday  
Direct Practice Career Brunch
- April 9, 2011 Saturday  
Pizza with Jim
- April 15, 2011 Friday  
Free Workshop: Community Based Participatory Research and Social Work

[More Events...](#)

## SSW Profiles

Dylan Hackbarth,  
Youth Studies Major

# Department Header

```
header {  
    height: 150px;  
    background: url(Green-  
Field.jpg);  
}
```

# Navigation

```
nav {  
    background-color:  
    white;  
}
```

```
nav ul {  
    margin: 25px 0;  
    font-weight: bold;  
}
```

```
nav a {  
    color: black;  
    text-decoration: none;  
}
```

# Design freedom

(kind of)





# Department of FAMILY SOCIAL SCIENCE

CEHD | College of Education + Human Development

[UNDERGRADUATE  
STUDENTS](#)

[GRADUATE STUDENTS](#)

**[FACULTY & STAFF](#)**

[Expertise Database](#)

[ALUMNI & FRIENDS](#)

[DEPARTMENT](#)

[RESEARCH & DISCOVERY](#)

[PROJECTS & CENTERS](#)

[OUTREACH & EXTENSION](#)

[COURSES](#)

[NEWS & CALENDAR](#)

[GIVING](#)

  
[go](#)

## Faculty & Staff

The department's distinguished faculty; known for excellence in teaching, theory development, research, outreach, and engagement, are committed to the application of research and theory for the benefit of the everyday lives of families.

Our lively, result-focused atmosphere is a place where true collaboration and learning are the keys to our success. Our staff provides professional and personalized support for faculty, students, alumni, and the college. The staff is encouraged to participate in career growth and professional development and is committed to providing excellent service.

## Faculty

Sara Axtell

Jean Bauer

Wayne Caron (deceased)

Shonda Craft

Sharon Danes

William Doherty

Jodi Dworkin

Abigail Gewirtz

William Goodman

Steven Harris

Jan McCulloch

Cynthia Meyer

Patricia Olson

Kathryn Rettig

Paul Rosenblatt

Martha Rueter

Catherine Solheim

Marlene Stum

Liz Wieling

Blong Xiong

Virginia Zuiker

## Non-resident Teaching Faculty

Michelle Craveiro

John Jankord

Mary Jo Katras

Sara Lassig

Beth Magistad

Tai Justin Mendenhall

Brier Miller Minor

Kristine Piescher

Lynn Von Korff

Sara Wright



## Research & Outreach

### Research Highlights

### Centers & Labs

### Outreach & Engagement

Teacher Education Redesign  
Initiative

### International Activities

### Educator Development and Research Center

### Professional Development

## CEHD | College of Education + Human Development

### OUTREACH AND ENGAGEMENT

CEHD works in "partnership with public and private sectors to enrich scholarship, research, and creative activity; enhance curriculum, teaching and learning; and prepare educated, engaged citizens" ([Office for Public Engagement](#)). We accomplish this work through engaging in research, teaching, and service for the community, in the community, and with the community.

### College in the Schools Program Presents the First Annual Golden Femur Awards



### Contact

#### CEHD Office of Engagement & Faculty Development

Heidi Barajas  
Associate Dean  
hbarajas@umn.edu  
612-625-4823

### University Links

Office for Public  
Engagement

Urban Research and  
Outreach/Engagement  
Center (UROC)

The Alliance: A University





- About the Institute +
- Child Psychology Graduate Program +
- Child Psychology Undergraduate Program +
- Early Childhood Education Programs +
- Minors & Certificates
- People +
- Research & Outreach +
- Shirley G. Moore Lab School
- News & Events +
- Giving

## Welcome!

**The Institute of Child Development-Department of Child Psychology (CPsy)** at the University of Minnesota has long been a premier center of scholarship, teaching, and outreach devoted to the understanding and fostering of child development. Coursework and research activities focus primarily on the central cognitive, social, emotional, and psychological processes that underlie the development of infants, children, and youth.

Founded in 1925, the Institute is one of the oldest departments studying children's development in the United States. From its inception, a key tenet of our department has been to "give away" child psychology. This philosophy has created an environment rich with collaborations, new ideas, and exciting interdisciplinary work. See more about our [history](#), our [undergraduate](#) and [graduate](#) programs, the [Shirley G. Moore Lab School](#), and the various collaborative [centers](#) and [programs](#) we are involved in!



## Upcoming events:

### April 7: [ICD Bag Lunch Colloquium](#)

"Children Pitching In and Catching On" Barbara Rogoff, UC-Santa Cruz

[Submit a calendar item!](#) See the [full calendar](#).

## ICD News:

### [Masten interviewed on talking to kids about Japan disaster](#)

March 17, 2011

Ann Masten, professor in the Institute of Child Development, comments extensively in a *Minneapolis Star Tribune* parenting blog article on talking with children about the disaster in Japan. Masten, who studies resiliency in children following disasters and other adverse circumstances, provides useful information for parents in relation to helping children understand any disaster. Read the article [here](#).

### [Research using X-Box Kinect to diagnose mental disorders in children](#)

March 15, 2011

A collaborative research project involving Canan Karatekin, associate professor at the Institute of Child Development, and faculty from the Medical School and the College of Science and Engineering is making news for its groundbreaking use of the X-Box Kinect



# What we learned

- Less Flexibility
- Emphasize individuality in conversation
- You won't keep everyone happy

# Questions?

@dansag

dansag@umn.edu

## Contact me...

- Twitter: @dansag
- Email: dansag@umn.edu

## Resources...

- The CSS Framework
  - <http://z.umn.edu/cehdcss>
- CSS Reset
  - <http://meyerweb.com/eric/tools/css/reset/>